



Leigh Maibes, REALTOR®

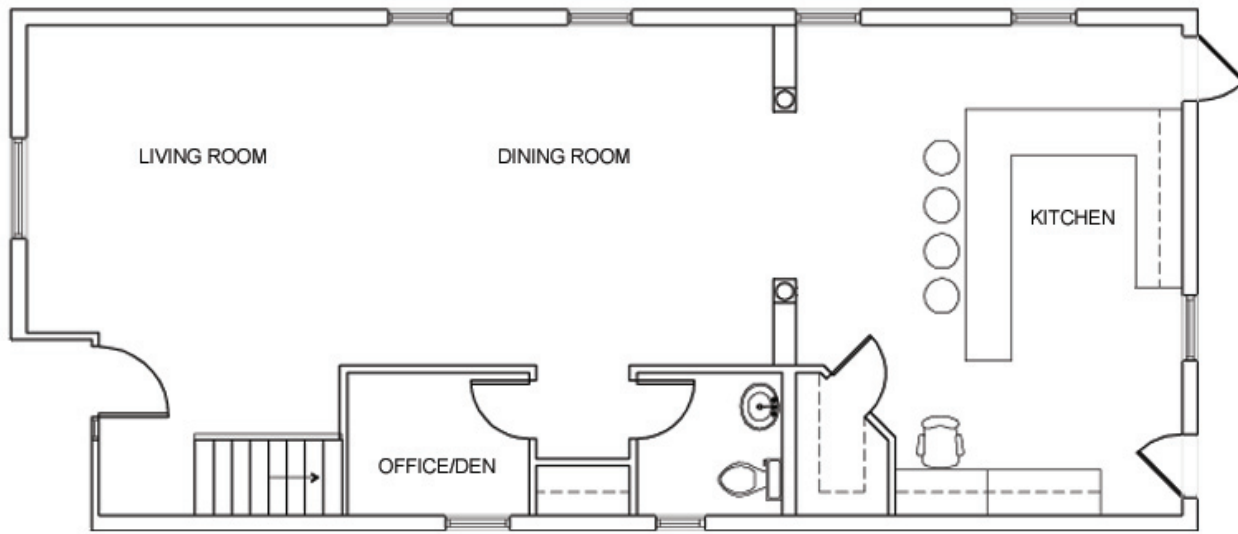
Proudly offering this home listing, and specializing in Saint Louis City, Historic Neighborhoods + Vintage Properties

3181 Portis Saint Louis, MO 63116

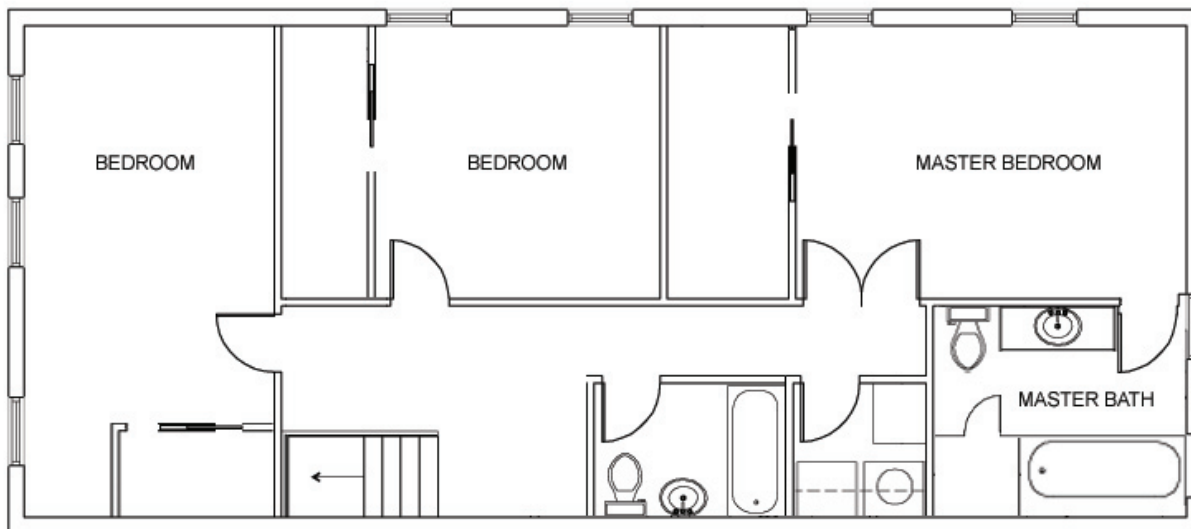


314.324.3322 | Leigh.Maibes@CircaSTL.com

www.3181Portis.com for more info, photos & downloadable floorplan drawings



Main level



Second level

Floorplan Disclaimer:

The floor plan illustration shown is an approximation of existing structures and features and is provided for convenience only with the permission of the seller. This was not drawn by a professional architect and cannot be a substitute for architectural drawings. All measurements are approximate and not guaranteed to be exact or to scale. Buyer should confirm measurements using their own sources prior to purchasing or writing an offer to purchase. Not for use with appraisal/assessment.



circa PROPERTIES
4507 S KINGSHIGHWAY BLVD
SAINT LOUIS, MO 63109
314 352 5200
314 352 5209 FAX
WWW.CIRCASTL.COM

Email: Leigh.Maibes@CircaSTL.com

314-324-3322

www.CircaSTL.com